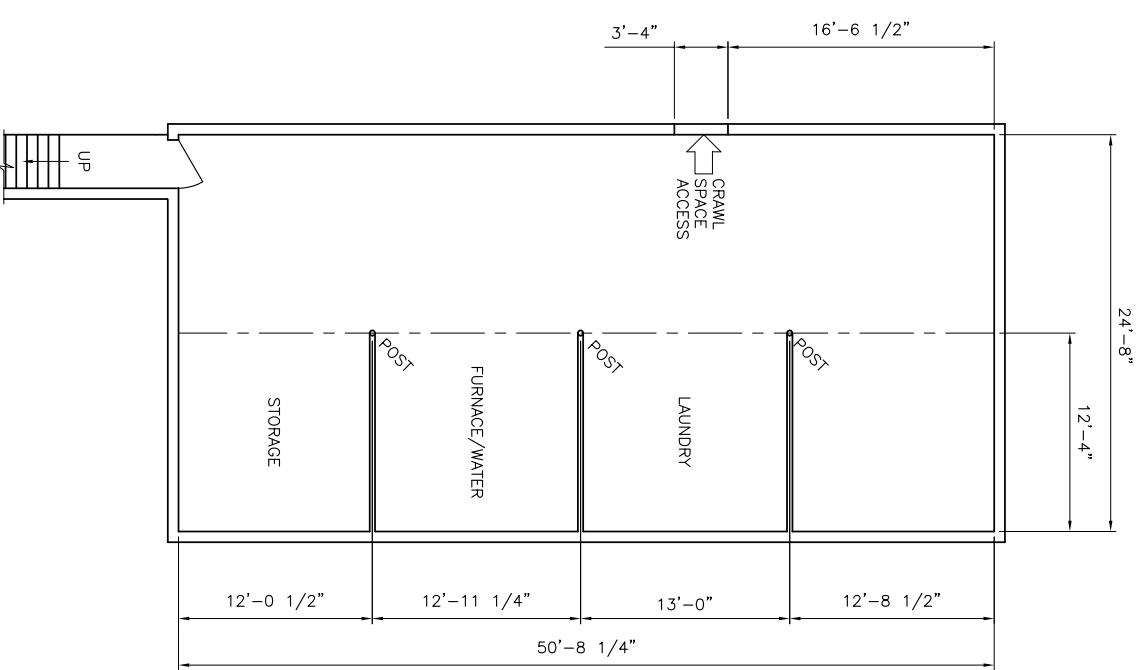


FLOOR PLAN



BASEMENT PLAN

NOTES:


1. CONTRACTOR TO VERIFY ALL DIMENSIONS PRIOR TO START OF WORK.
2. WINDOWS ARE SHOWN IN CONCEPTUAL LOCATIONS ONLY.



REVIEW & COMMENT
JUNE 16, 2009

NO.	DATE	BY	REVISIONS
1	6/16/09	DLK	REVIEW & COMMENT
2			
3			
4			
5			
6			
7			

DWG. NO.	DESCRIPTION
2091150	REFERENCE DWG.


CIM-Tech, Inc.
 332 W. US Hwy 30, Suite F
 Valparaiso, IN 46385
 219-476-0302
 CITY OF VALPARAISO
 MEN'S HALFWAY HOUSE
 1408-1412 CHICAGO STREET
 DR. BY DLK DATE 6/10/09
 SITE BY BPG DATE 6/12/09
 PLOT SCALE 3/8"=1'-0"
 SHEET: 1150-001

THIS DRAWING MAY NOT BE USED FOR CONSTRUCTION OR FABRICATION UNTIL SIGNED AS CHECKED AND ISSUED FOR CONSTRUCTION.

ALL NEW IDEAS AND INVENTIONS SHOWN IN THIS DRAWING ARE THE PROPERTY OF CIM-TECH, INC. AND ARE TO BE MAINTAINED IN CONFIDENCE. NO PART OF THIS DRAWING IS TO BE COPIED OR REPRODUCED WITHOUT WRITTEN PERMISSION AND MUST BE RETURNED UPON REQUEST.

This document was created with Win2PDF available at <http://www.win2pdf.com>.
The unregistered version of Win2PDF is for evaluation or non-commercial use only.
This page will not be added after purchasing Win2PDF.